

First Draw: 0.023 PPM
Flush: 0.0030 PPM

First Draw: 0.0040 PPM
Flush: 0.026 PPM

First Draw: 0.015 PPM
Flush: 0.0026 PPM

Results in bold indicate concentrations above 15 parts per billion (ppb).

First Draw: 0.019 PPM
Flush: 0.0023 PPM

First Draw: 0.016 PPM
Flush: 0.0034 PPM

First Draw: 0.022 PPM
Flush: 0.0051 PPM

First Draw: 0.026 PPM
Flush: 0.0071 PPM

First Draw: 0.028 PPM
Flush: 0.0022 PPM

First Draw: 0.025 PPM
Flush: 0.0058 PPM

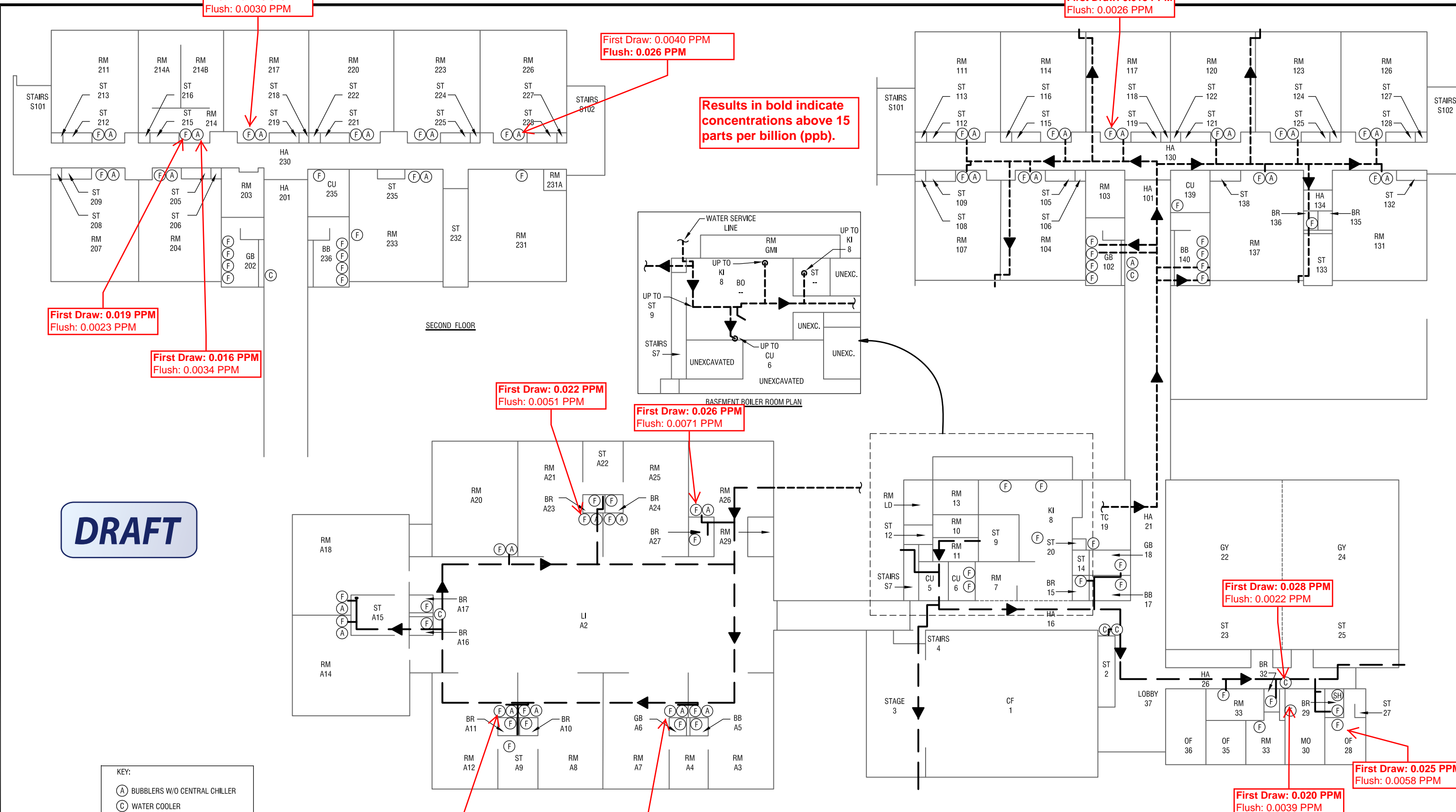
First Draw: 0.020 PPM
Flush: 0.0039 PPM

First Draw: 0.018 PPM
Flush: 0.0069 PPM

First Draw: 0.019 PPM
Flush: 0.0048 PPM

DRAFT

- KEY:
- (A) BUBBLERS W/O CENTRAL CHILLER
 - (C) WATER COOLER
 - (F) WATER FAUCETS (TAPS)
 - (SH) SHOWER
 - MAIN COLD WATER LINE (ABOVE)
 - - - MAIN COLD WATER LINE (BELOW)
 - WATER FLOW



LABELLA
Associates, D.P.C.

300 STATE STREET
ROCHESTER, NY 14614
P: (585) 454-6110
F: (585) 454-3066
www.labellapc.com

Engineering
Architecture
Environmental
Planning

COPYRIGHT © 2014 LABELLA ASSOCIATES, D.P.C.

It is a violation of New York Education Law Article 145 Sec. 7209, for any person, unless acting under the direction of a licensed architect, professional engineer, or land surveyor, to alter an item in any way. If an item bearing the seal of an architect, engineer, or land surveyor is altered: the altering architect, engineer, or land surveyor shall affix to the item their seal and notation "altered by" followed by their signature and date of such alteration, and a specific description of the alteration.

DRAWING NAME: **NORTHEAST ELEMENTARY SCHOOL LAYOUT**

PROJECT NAME: **ITHACA CITY SCHOOL DISTRICT WATER PROJECT MANAGEMENT SERVICES**

REVISIONS:		
DRAWN BY:	DATE:	PROJECT NO:
MJB	7/12/2016	2160845
ISSUED FOR:	SHEET NO.	