

- KEY:
- (A) BUBBLERS W/O CENTRAL CHILLER
  - (C) WATER COOLER
  - (F) WATER FAUCETS (TAPS)
  - (SH) SHOWER
  - (EW) EYEWASH STATION
  - (J) COLD WATER RISER POINTS
  - MAIN COLD WATER LINE
  - MAIN COLD WATER LINE (BELOW)
  - ➔ WATER FLOW

NOTE: ALL MAIN COLD WATER LINE (BELOW) PIPING FEEDS FIXTURES PLACED ABOVE

**LABELLA**  
Associates, D.P.C.

300 STATE STREET  
ROCHESTER, NY 14614  
P: (585) 454-6110  
F: (585) 454-3066  
www.labellapc.com

Engineering  
Architecture  
Environmental  
Planning

COPYRIGHT © 2014 LABELLA ASSOCIATES, D.P.C.

It is a violation of New York Education Law Article 145 Sec.7209, for any person, unless acting under the direction of a licensed architect, professional engineer, or land surveyor, to alter an item in any way. If an item bearing the seal of an architect, engineer, or land surveyor is altered; the altering architect, engineer, or land surveyor shall affix to the item their seal and notation "altered by" followed by their signature and date of such alteration, and a specific description of the alteration.

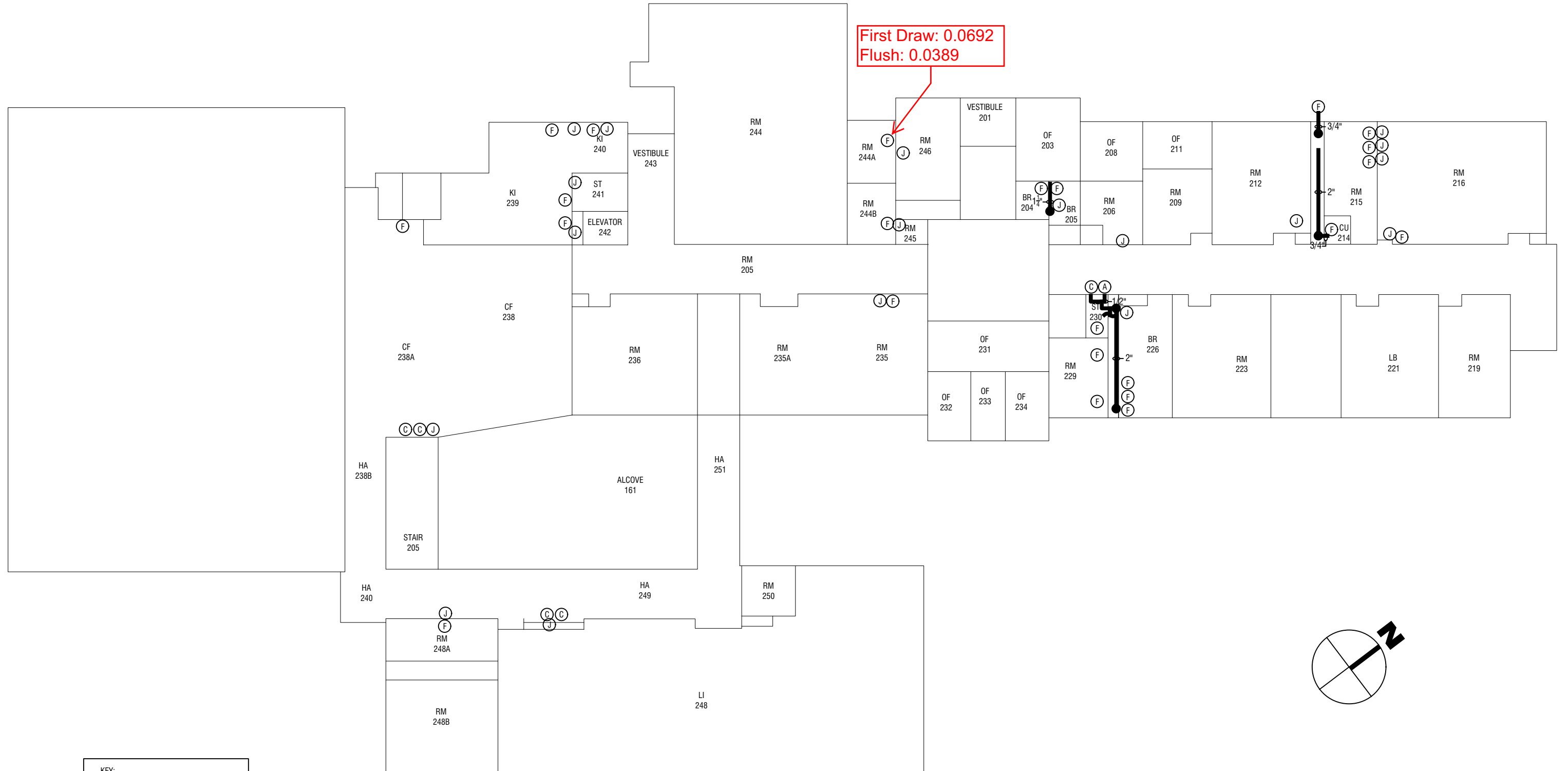
DRAWING NAME: **LEHMAN ALTERNATIVE CENTRAL SCHOOL  
FIRST FLOOR LAYOUT**

PROJECT NAME: **ITHACA CITY SCHOOL DISTRICT  
WATER PROJECT MANAGEMENT SERVICES**

|                  |                     |                        |
|------------------|---------------------|------------------------|
| REVISIONS:       |                     |                        |
| DRAWN BY:<br>MJB | DATE:<br>10/14/2016 | PROJECT NO:<br>2160845 |
| ISSUED FOR:      | SHEET NO.           |                        |

NOTE: ALL FIXTURES WITHOUT PIPING SHOWN  
ARE FED FROM PIPING BELOW ON FIRST FLOOR

First Draw: 0.0692  
Flush: 0.0389



KEY:

- (A) BUBBLERS W/O CENTRAL CHILLER
- (C) WATER COOLER
- (F) WATER FAUCETS (TAPS)
- (SH) SHOWER
- (EW) EYEWASH STATION
- (J) COLD WATER RISER POINTS
- MAIN COLD WATER LINE
- MAIN COLD WATER LINE (BELOW)
- WATER FLOW

**LABELLA**  
Associates, D.P.C.

300 STATE STREET  
ROCHESTER, NY 14614  
P: (585) 454-6110  
F: (585) 454-3066  
www.labellapc.com

Engineering  
Architecture  
Environmental  
Planning

COPYRIGHT © 2014 LABELLA ASSOCIATES, D.P.C.

It is a violation of New York Education Law Article 145 Sec.7209, for any person, unless acting under the direction of a licensed architect, professional engineer, or land surveyor, to alter an item in any way. If an item bearing the seal of an architect, engineer, or land surveyor is altered; the altering architect, engineer, or land surveyor shall affix to the item their seal and notation "altered by" followed by their signature and date of such alteration, and a specific description of the alteration.

DRAWING NAME: **LEHMAN ALTERNATIVE CENTRAL SCHOOL  
SECOND FLOOR LAYOUT**

PROJECT NAME: **ITHACA CITY SCHOOL DISTRICT  
WATER PROJECT MANAGEMENT SERVICES**

|                  |                     |                        |
|------------------|---------------------|------------------------|
| REVISIONS:       |                     |                        |
| DRAWN BY:<br>MJB | DATE:<br>10/14/2016 | PROJECT NO:<br>2160845 |
| ISSUED FOR:      | SHEET NO.           |                        |