

First Draw: 0.026 mg/L  
Flush: 0.0065 mg/L

First Draw: 0.019 mg/L  
Flush: 0.0049 mg/L

First Draw: 0.020 mg/L  
Flush: 0.0036 mg/L

- KEY:
- COLD WATER PIPING (BELOW)
  - COLD WATER LINE (ABOVE)
  - ARCHITECTURAL WALLS
  - (A) BUBBLERS W/O CENTRAL CHILLER
  - (C) WATER COOLER
  - (F) WATER FAUCETS (TAPS)
  - (J) VERTICAL PIPING BETWEEN LOWER AND UPPER LEVELS

**LABELLA**  
Associates, D.P.C.

300 STATE STREET  
ROCHESTER, NY 14614  
P: (585) 454-6110  
F: (585) 454-3066  
www.labellapc.com

Engineering  
Architecture  
Environmental  
Planning

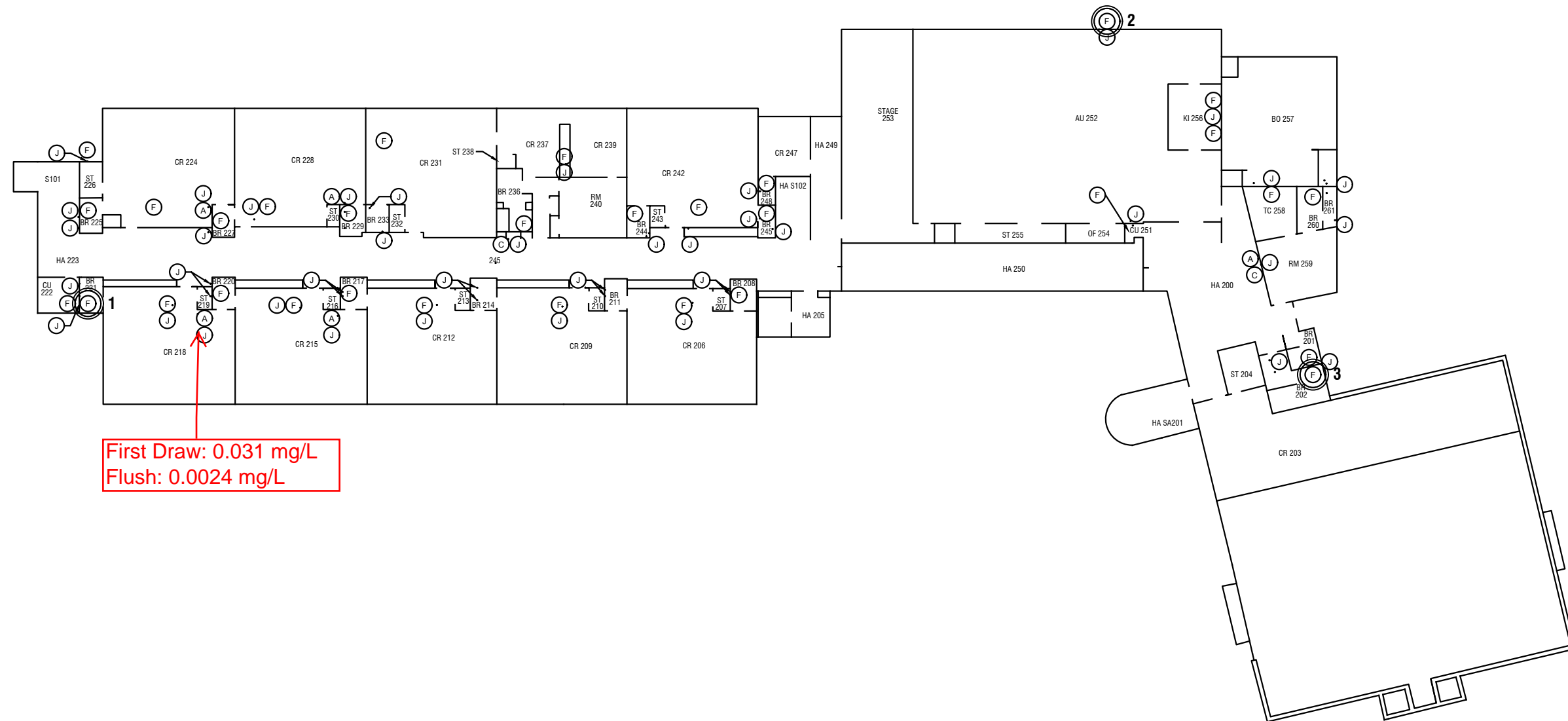
COPYRIGHT © 2014 LABELLA ASSOCIATES, D.P.C.

It is a violation of New York Education Law Article 145 Sec.7209, for any person, unless acting under the direction of a licensed architect, professional engineer, or land surveyor, to alter an item in any way. If an item bearing the seal of an architect, engineer, or land surveyor is altered; the altering architect, engineer, or land surveyor shall affix to the item their seal and notation "altered by" followed by their signature and date of such alteration, and a specific description of the alteration.

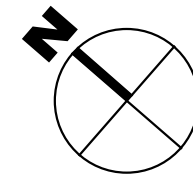
DRAWING NAME: **CAYUGA HEIGHTS ELEMENTARY SCHOOL LOWER LEVEL LAYOUT**

PROJECT NAME: **ITHACA CITY SCHOOL DISTRICT WATER PROJECT MANAGEMENT SERVICES**

REVISIONS:		
DRAWN BY: EMU	DATE: 07/26/2016	PROJECT NO: 2160845
ISSUED FOR:	SHEET NO.	



First Draw: 0.031 mg/L  
Flush: 0.0024 mg/L



KEY:

—	COLD WATER PIPING (BELOW)
—	COLD WATER LINE (ABOVE)
—	ARCHITECTURAL WALLS
(A)	BUBBLERS W/O CENTRAL CHILLER
(C)	WATER COOLER
(F)	WATER FAUCETS (TAPS)
(J)	VERTICAL PIPING BETWEEN LOWER AND UPPER LEVELS
(F) 10	FLUSHING OUTLET

NOTES:

- ROOM NAMES TAKEN FROM "1993/1994 CAPITAL PROJECTS CODE COMPLIANCE PRESERVATION" PROJECT.
- THE NORTH ARROW SHOWN IS A REPRESENTATION OF DIRECTION OF NORTH BUT MAY VARY.
- PIPES AND FIXTURES ACCORDING TO MULTIPLE SETS OF PLANS PREPARED IN 1953, 1956, 1968, 1987, AND 1994.

**LABELLA**  
Associates, D.P.C.

300 STATE STREET  
ROCHESTER, NY 14614  
P: (585) 454-6110  
F: (585) 454-3066  
www.labellapc.com

Engineering  
Architecture  
Environmental  
Planning

COPYRIGHT © 2014 LABELLA ASSOCIATES, D.P.C.

It is a violation of New York Education Law Article 145 Sec.7209, for any person, unless acting under the direction of a licensed architect, professional engineer, or land surveyor, to alter an item in any way. If an item bearing the seal of an architect, engineer, or land surveyor is altered; the altering architect, engineer, or land surveyor shall affix to the item their seal and notation "altered by" followed by their signature and date of such alteration, and a specific description of the alteration.

DRAWING NAME: **CAYUGA HEIGHTS ELEMENTARY SCHOOL UPPER LEVEL FLUSHING PLAN**

PROJECT NAME: **ITHACA CITY SCHOOL DISTRICT WATER PROJECT MANAGEMENT SERVICES**

REVISIONS:

DRAWN BY: EMU	DATE: 07/29/2016	PROJECT NO: 2160845
ISSUED FOR:	SHEET NO.	