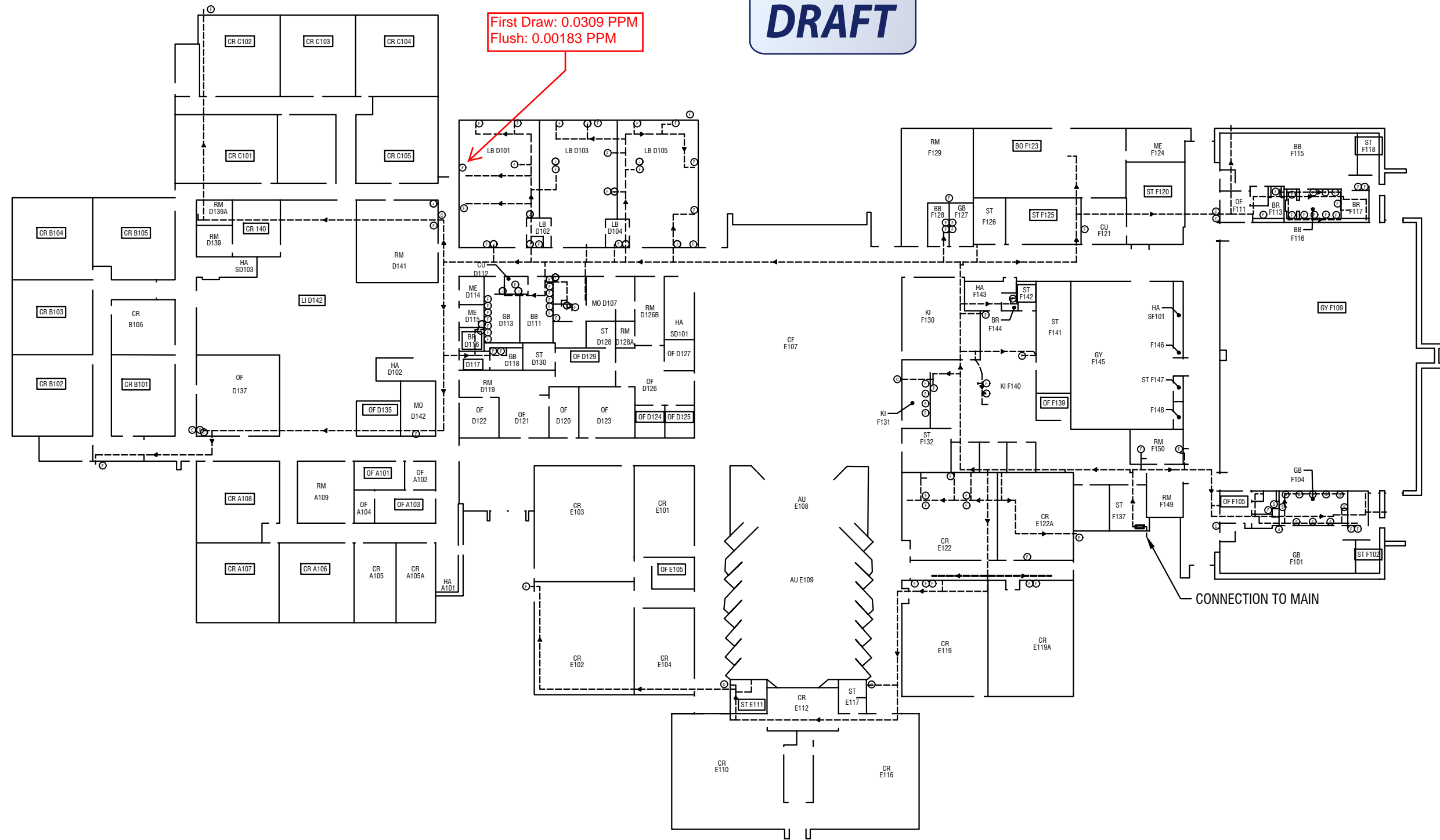
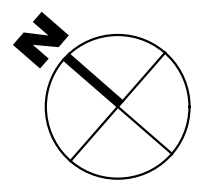


DRAFT

First Draw: 0.0309 PPM
Flush: 0.00183 PPM



CONNECTION TO MAIN



- KEY:
- COLD WATER PIPING (BELOW)
 - - - COLD WATER LINE (ABOVE)
 - ARCHITECTURAL WALLS
 - (A) BUBBLERS W/O CENTRAL CHILLER
 - (C) WATER COOLER
 - (F) WATER FAUCETS (TAPS)
 - (J) VERTICAL PIPING BETWEEN 1ST AND 2ND FLOOR

LABELLA
Associates, D.P.C.

300 STATE STREET
ROCHESTER, NY 14614
P: (585) 454-6110
F: (585) 454-3066
www.labellapc.com

Engineering
Architecture
Environmental
Planning

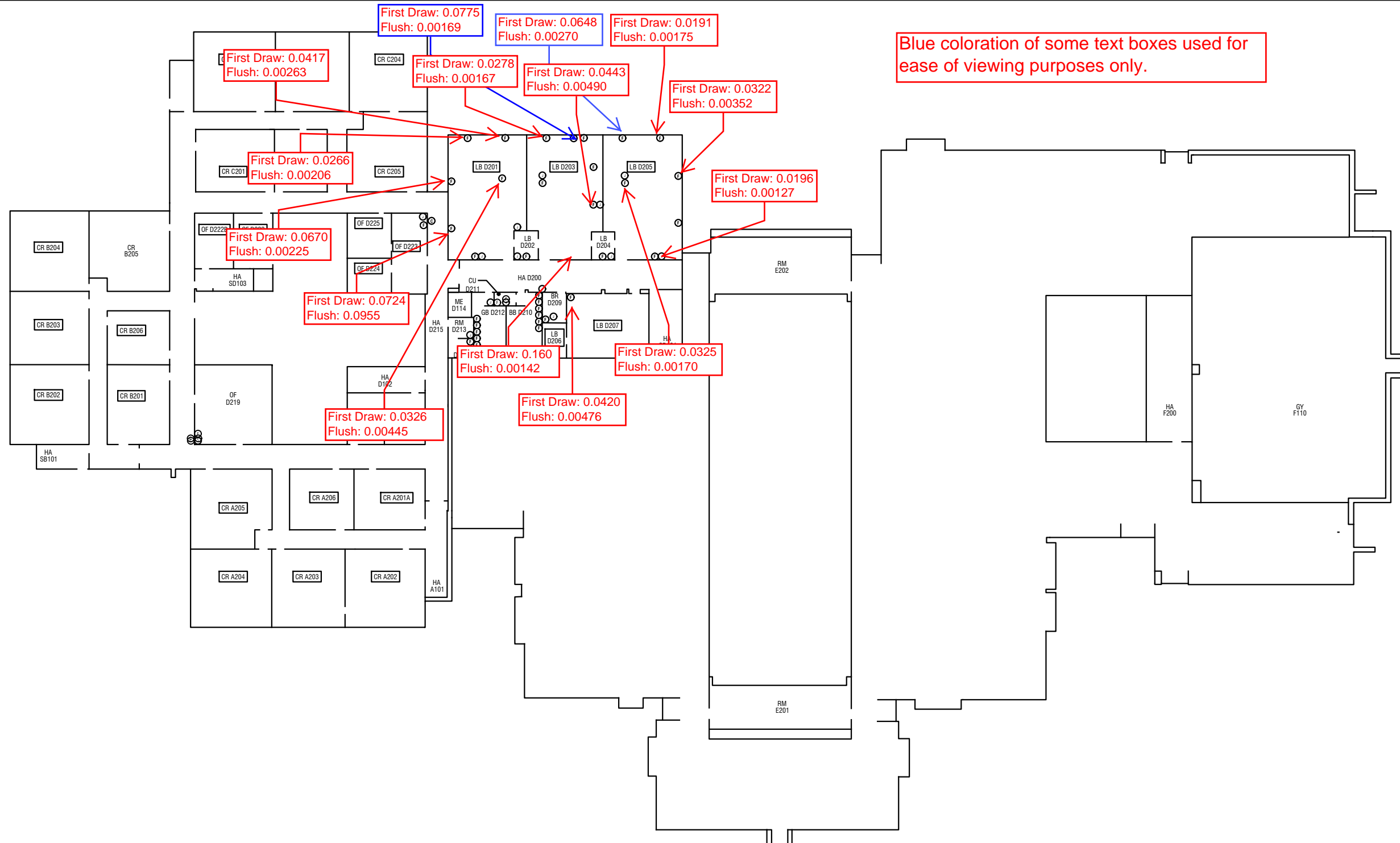
COPYRIGHT © 2014 LABELLA ASSOCIATES, D.P.C.

It is a violation of New York Education Law Article 145 Sec.7209, for any person, unless acting under the direction of a licensed architect, professional engineer, or land surveyor, to alter an item in any way. If an item bearing the seal of an architect, engineer, or land surveyor is altered; the altering architect, engineer, or land surveyor shall affix to the item their seal and notation "altered by" followed by their signature and date of such alteration, and a specific description of the alteration.

DRAWING NAME: **BOYNTON MIDDLE SCHOOL
FIRST FLOOR LAYOUT**

PROJECT NAME: **ITHACA CITY SCHOOL DISTRICT
WATER PROJECT MANAGEMENT SERVICES**

REVISIONS:		
DRAWN BY: EMU	DATE: 07/26/2016	PROJECT NO: 2160845
ISSUED FOR:	SHEET NO.	



First Draw: 0.0417
Flush: 0.00263

First Draw: 0.0775
Flush: 0.00169

First Draw: 0.0648
Flush: 0.00270

First Draw: 0.0191
Flush: 0.00175

First Draw: 0.0278
Flush: 0.00167

First Draw: 0.0443
Flush: 0.00490

First Draw: 0.0322
Flush: 0.00352

First Draw: 0.0266
Flush: 0.00206

First Draw: 0.0670
Flush: 0.00225

First Draw: 0.0724
Flush: 0.0955

First Draw: 0.0196
Flush: 0.00127

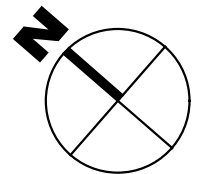
First Draw: 0.160
Flush: 0.00142

First Draw: 0.0325
Flush: 0.00170

First Draw: 0.0326
Flush: 0.00445

First Draw: 0.0420
Flush: 0.00476

Blue coloration of some text boxes used for ease of viewing purposes only.



- KEY:
- COLD WATER PIPING (BELOW)
 - COLD WATER LINE (ABOVE)
 - ARCHITECTURAL WALLS
 - (A) BUBBLERS W/O CENTRAL CHILLER
 - (C) WATER COOLER
 - (F) WATER FAUCETS (TAPS)
 - (J) VERTICAL PIPING BETWEEN 1ST AND 2ND FLOOR

LABELLA
Associates, P.C.

300 STATE STREET
ROCHESTER, NY 14614
P: (585) 454-6110
F: (585) 454-3066
www.labellapc.com

Engineering
Architecture
Environmental
Planning

COPYRIGHT © 2014 LABELLA ASSOCIATES, D.P.C.

It is a violation of New York Education Law Article 145 Sec.7209, for any person, unless acting under the direction of a licensed architect, professional engineer, or land surveyor, to alter an item in any way. If an item bearing the seal of an architect, engineer, or land surveyor is altered; the altering architect, engineer, or land surveyor shall affix to the item their seal and notation "altered by" followed by their signature and date of such alteration, and a specific description of the alteration.

DRAWING NAME: **BOYNTON MIDDLE SCHOOL
SECOND FLOOR LAYOUT**

PROJECT NAME: **ITHACA CITY SCHOOL DISTRICT
WATER PROJECT MANAGEMENT SERVICES**

REVISIONS:		
DRAWN BY: EMU	DATE: 07/26/2016	PROJECT NO: 2160845
ISSUED FOR:	SHEET NO.	